

Using the Texas Instruments TI-Graph Link™ Software for the TI-83/TI-84+ Graphics Calculator.

by
Anthony S. Pyzdrowski Ph.D.
Department of Mathematics and Computer Science
California University of Pennsylvania

and

Laura J. Pyzdrowski, Ed.D.
Department of Mathematics
West Virginia University

Texas Instruments Graph Link™ Software Overview	1
Using the TI-Graph Link™ Program	1
Layout of the TI-Graph Link™ Screen	1
Creating a Program with the TI-Graph Link™ Program	2
Opening a Program with the TI-Graph Link™ Program	2
Saving a Program with the TI-Graph Link™ Program	3
Closing a Program with the TI-Graph Link™ Program	3
Using the Keypad Window	3

Texas Instruments Graph Link™ Software Overview

The TI-Graph Link™ software is an older communications and data management package that allows the user to connect the calculator to the computer through the use of a serial cable. The older serial cables are the gray and black cables. These cables require the use of a serial interface on the computer. The USB mini-A to mini-B or SilverLink USB to Calculator serial cables will not work with this package. Even though one may not use this software package for communications with the calculator, it is useful for program development for the calculator. The TI-Graph Link™ software provides a keyboard screen and the functions of the calculator on the computer. Additionally, the TI-Graph Link™ provides a means to create and edit the program files for the calculator. Through the use of the calculator keyboard screen, the list of functions, and the computer keyboard, the user can create and edit programs for the calculator on the computer. Development and maintenance of the TI-83/TI-84+ programs is quicker through the use of the computer.

Once a program is created on the computer, it can be transferred to and from the calculator through the use of the TI Connect™ software package and a standard mini-A to mini-B USB or the SilverLink cables.

TI Connect™ is available for download from:

http://education.ti.com/educationportal/sites/US/productDetail/us_ti_connect.html

The TI Connect™ installation instructions will also take you to the download page:

http://education.ti.com/educationportal/sites/US/nonProductMulti/download_stepbystep.html

Using the TI-Graph Link™ Program

Layout of the TI-Graph Link™ Screen

When the TI-Graph Link™ program opens, two smaller windows appear in the program window, the keyboard and a program window.

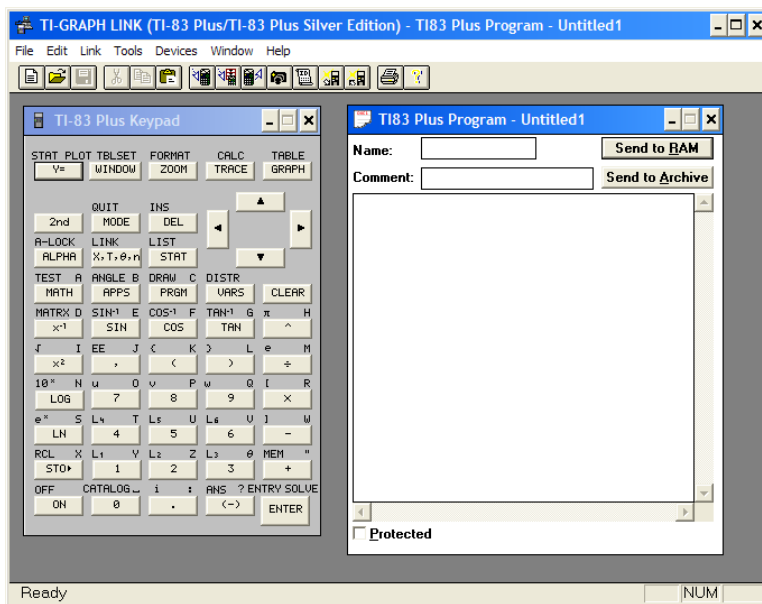


Figure 1 TI-Graph Link Window.

Through the File menu the user can create a new program or list file. Open, close, save, and print files.

Through the Edit menu the user can perform standard editing operations like Undo, Cut, Copy, Paste, Find, Replace, and Clear Window.

Unless the user has an older Graph Link™ serial cable, the features under the Link and Devices menus are not useable. Use the TI-Connect™ package for file transfers to and from the calculator.

The Window menu provides the user the ability to select the currently opened windows like the keyboard, or a specific program window. Multiple program windows can be opened at the same time. A list of the calculator functions is also available, this is like the Catalog key on the calculator but is easier to access since the functions are organized under main categories. The keyboard and function list windows share the same window space so only one is displayed at a time.

Creating a Program with the TI-Graph Link™ Program

Enter the program name into the Name field of the program window. This is the name that will be associated with the program on the calculator. The file name that you will save the program as is independent of this program name.

A program comment can be entered into the Comment field.

Select Save As... from the File menu. Navigate to the desired directory and enter a file name into the File Name field. Select OK to complete the file save operation.

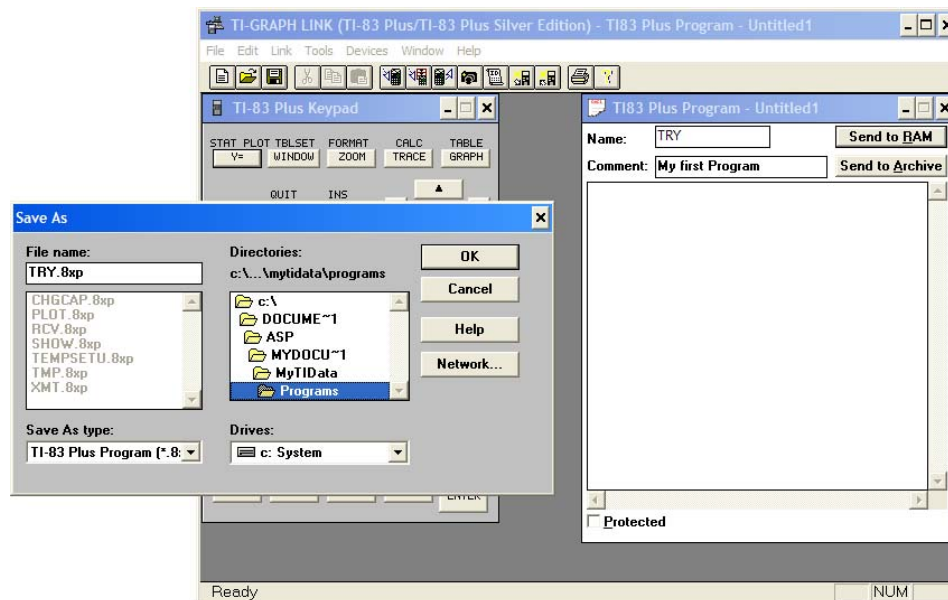


Figure 2 Program Save As...

Opening a Program with the TI-Graph Link™ Program

Select Open... from the File menu or select the open folder icon from the toolbar. Navigate to

the desired directory. Select the desired file. The .8XP file extensions are the program files for the TI-83/84 calculators. Select Ok to complete the operation. Files that are currently opened remain open. A new edit window will open for the newly selected file. Through the Window menu, any of the opened files can be selected.

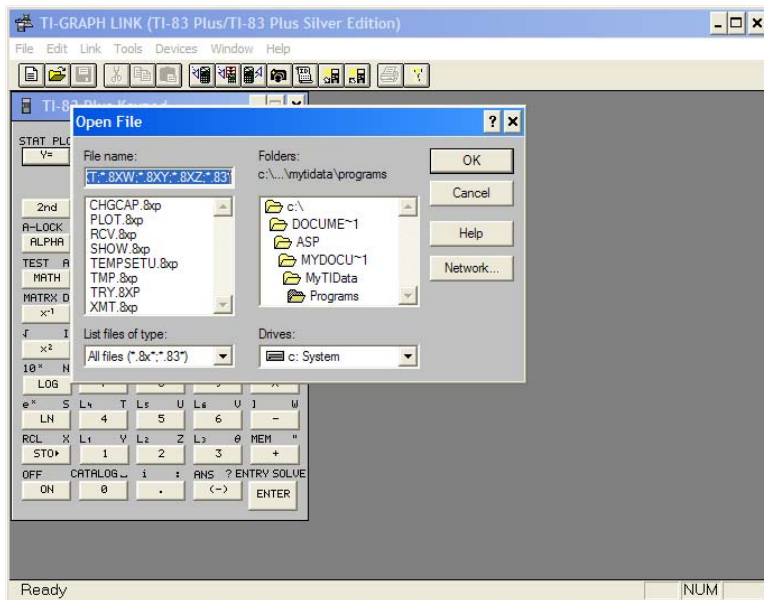


Figure 3 Program Open File.

Saving a Program with the TI-Graph Link™ Program

To save the current file, select Save from the File menu or the diskette icon from the toolbar. Save and the diskette icon are only accessible when the file has changed. If no changes have been made to the file, the Save or diskette icon will not be highlighted.

Closing a Program with the TI-Graph Link™ Program

To close an edit window, select the close window icon at the top right of the desired edit screen.

Using the Keypad Window

Keys on the keypad are selected with the mouse. When a menu key is pressed a window opens displaying the options under this menu key. The window contains two columns. The left column contains the first level of menu selections. The right column contains the items under the current menu item selected in the left column. Select the appropriate first level menu item, left column, then select the desired item from the right column. The menu window can remain opened. To access the keypad with an opened menu window, the menu window will need to be moved first. Only one menu window will be opened. When a different menu item is selected from the keypad, the menu window will change to that menu item. When a menu item is selected the item will be inserted into the program file at the current cursor location.

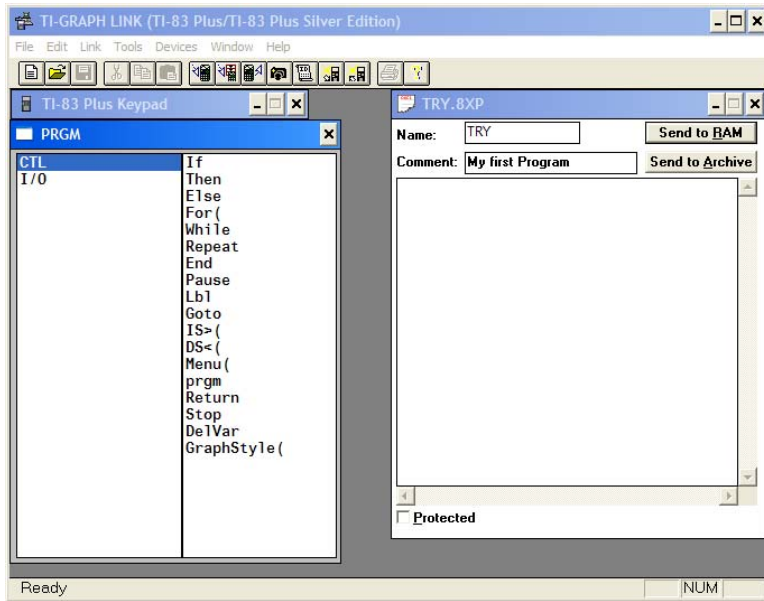


Figure 4 Keypad, PRGM menu.

A Function List window can be opened from the Window menu. Through the Function List all of the calculator functions can be accessed. Again, two columns are used to select an item through a sub category. The Function List window uses the same window as the keypad. The user either has the Keypad, Function List, or neither window open.

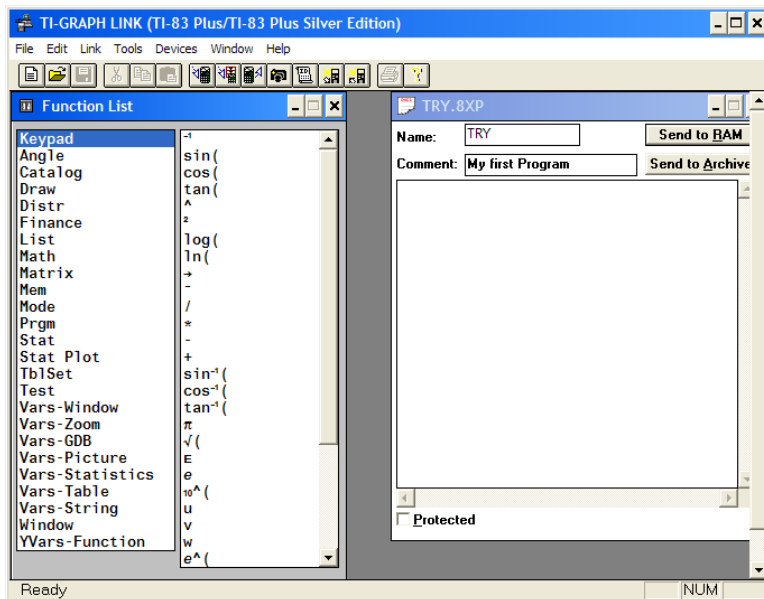


Figure 5 Function List.